

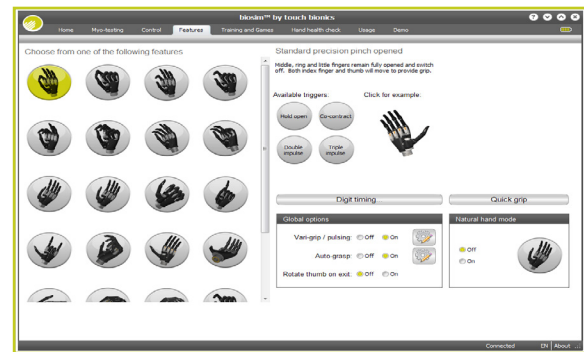
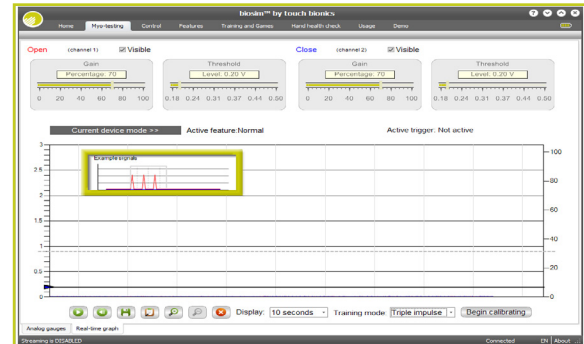
Designed for clinicians, **biosim-pro** is a software tool that provides enhanced features and control settings for **i-limb ultra revolution**, **i-limb ultra**, **i-limb digits**, **i-limb access** and **virtu-limb** devices. This intuitive software connects to the device via a Bluetooth[®] wireless connection for ease of use.

biosim-pro provides prosthetists and therapists with the ability to help their patients select the grip patterns and hand features that best suit their daily needs. The tool also allows adjustments to be made to the electrode settings to optimize device performance.

Clinicians can use biosim-pro to access usage information for Touch Bionics' prostheses, which provides useful insight into how their patients are using the device, and can provide diagnostic information regarding the relative health of the prosthesis.

biosim-pro key features:

- Ability to adjust gain and threshold levels, including documented output of the assessment session
- Enabling and disabling of grip patterns and other features, including pulsing and vari-grip modes
- Training modes to help users achieve activation of features and improve myo-signal response
- Real-time graphs and dials showing patients' input signals
- Statistical analysis and documentation of device usage
- Diagnostic tool to determine hand health
- Auto-calibration of co-contract, double and triple impulse signals
- Custom gesture mode to allow creation of custom gestures
- Custom grip position mode
- Offline patient data management
- Selection of various control strategies, including both dual and single site options
- Demo mode to enable automatic run through of selected grip patterns
- Battery status with low battery adjustable audio signal and serial number recognition
- Save and review current device settings for future reference
- Automatically detects whether connecting to a prosthesis or virtu-limb unit, and provides options accordingly
- Quick Grips feature enables patient to quickly put hand in desired grasp pattern



The screenshot shows the 'Usage' tab of the biosim-pro software, displaying a table of feature counts. The table is organized into columns for 'Power cycles', 'Excessive signal activity counts', and 'Feature counts'. It lists various features like 'Thumb 2.5cm chuck (brand) opened', 'Index pinch', 'Lateral grip', etc., with their respective counts.

Power cycles: 3			Excessive signal activity counts			Feature counts		
Open	Close		Input channel	Refresh counts	Feature name	Open	Close	
Thumb	4	0	Open (chuck 1)	Reset counts	Thumb 2.5cm chuck (brand) opened	0	0	
Thumb	2	1	Close (chuck 2)	Save counts	Thumb 2.5cm chuck (brand) closed	0	0	
Index	4	0		View count history	Thumb pinch quick	0	0	
Middle	2	1			Lateral grip	0	0	
Ring	2	1			Index pinch	0	0	
Little	2	1			Custom gesture	0	0	
Thumb-releaser	0	2			Custom finger positions	0	0	
					Rotate thumb	0	0	
					Open palm	0	0	
					Cylindrical	0	0	
					Heeler	0	0	
					Handshake	0	0	
					One finger trigger	0	0	
					Two finger trigger	0	0	

System requirements:

- Windows XP, Windows Vista, Windows 7, or Windows 8
- Microsoft .NET Framework v3.5
- Mac OS X Lion (10.7) and higher
- USB port for Bluetooth connector
- Administrative rights to install the software and connector

biosim-pro features by i-limb product:

Features:	i-limb ultra revolution	i-limb ultra	i-limb access
Number of multi-articulating digits	5	5	5
Pulse modulation	5 digits	5 digits	3 digits
Individual digit stall out ability	Yes	Yes	Yes
Compliant grip, proportional control	Yes	Yes	Yes
Enhanced grip feature (vari-grip)	Yes	Yes	No
Drop prevention feature (auto-grasp)	Yes	Yes	Yes
Custom gestures and custom grips	Yes	Yes	No
Number of grip patterns and gestures	24	14	12
Powered thumb	Yes	No	No
Mobile app for patients	Yes	Yes	Yes
Mobile app with Quick Grips feature	Yes, 24	No	No
biosim-i software for patient	Yes	Yes	No
biosim-pro software for clinician	Yes	Yes	Yes

biosim-pro mobile control app

Designed for clinicians, **biosim-pro** app enables clinicians to access the enhanced features and control settings for **i-limb ultra revolution**, **i-limb ultra**, **i-limb access**, **i-limb digits**, and **virtu-limb** devices without being connected to a computer. This intuitive app is downloadable from the Apple® app store and connects to the device via a Bluetooth® wireless connection for ease of use.

Available for all i-limb devices:

Unique mobile device application that allows clinicians to quickly and easily change the configuration of their patients Touch Bionics prosthesis, without the need to log in to a computer

- Offers many of the same features as the computer version of biosim-pro
- App automatically recognizes i-limb device and adjusts features to accommodate.
- Available for iPhone® 4s, iPhone® 5, iPad® with retina display, iPad® mini, and iPod® Touch 4/5

